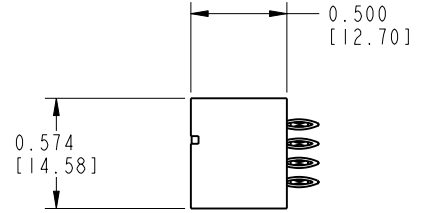
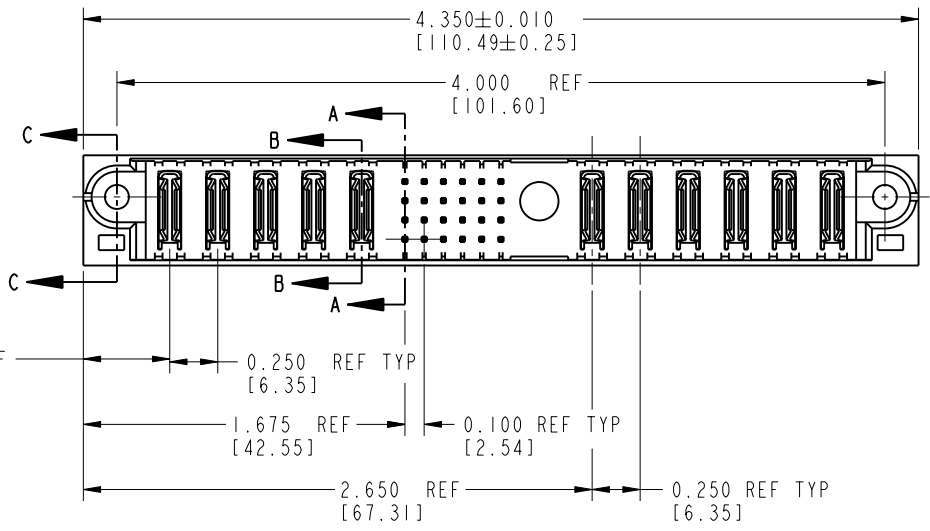
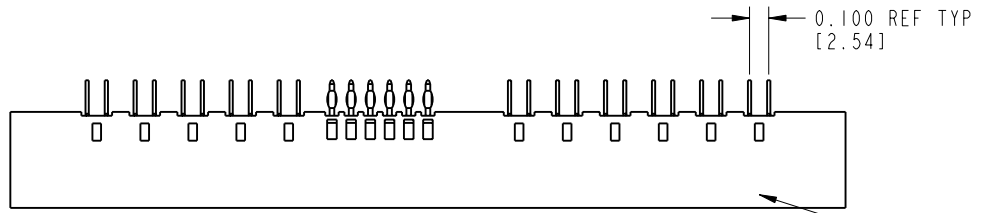


Tous droits strictement réservés. Reproduction ou communication o des liens interdité sous quelque forme que ce soit sans autorisation écrite du propriétaire. Propriété de c FCI. Droits de reproduction FCI.

All rights strictly reserved. Reproduction or issue to third parties in any form whenever is not permitted without written authority from the proprietor. Property of FCI. Copyright FCI.



PRODUCT No.	ROWS	POWER					SIGNAL						POWER								
		E1	P1	P2	P3	P4	P5	1	2	3	4	5	6	M1	P6	P7	P8	P9	P10	P11	E2
51860-002-- NOTE: 3	D C B A		PC	PC	PC	PC	PC	G	G	G	G	G	G	G	PC	PC	PC	PC	PC	PC	



0.450 REF [11.43]	0.250 REF TYP [6.35]	0.100 REF TYP [2.54]	0.250 REF TYP [6.35]
1.675 REF [42.55]	2.650 REF [67.31]	4.000 REF [101.60]	4.350 ± 0.010 [110.49 ± 0.25]

CODE	DIM "M" ±.010 [0.25]	CONTACT TYPE
G	0.270 [6.86]	SIGNAL
K	0.220 [5.59]	SIGNAL
PC	N/A [N/A]	POWER

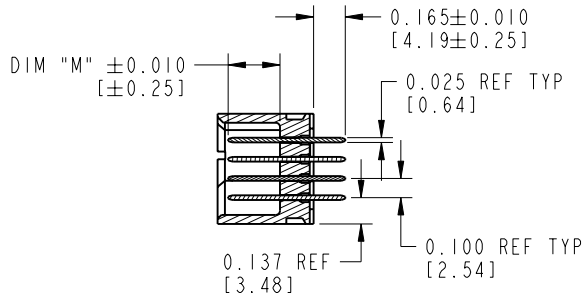
mat'l code				SEE NOTE 1		tolerances unless otherwise specified		CUSTOMER		 www.fciconnect.com	
ltr	ecn no.	dr	date	linear	.XX±.01/0.X±0.3	projection	COPY		title		code
A	V12513	DAI	10/31/01	angles	.XXX±.005/0.XX±0.13		INCH/MM		5P + 24S + 1M + 6P		213
B	V21104	TAB	09/30/02		.XXX±.0020/0.XXX±0.051	scale	1:1		VERTICAL PRESS-FIT HEADER		sheet
C	DG05-0572	JMG	01/05/06	dr	0°±2°				product family		1 of 3
				engr	J. ALLISON 10/3/01			PWRBLADE			
				chr	J. ALLISON 10/3/01			size		dwg no	
				appd	J. ALLISON 10/3/01			A		51860-002	
sheet index		revision sheet		C	C	C					code
1		2		1	2	3					22526

Tous droits strictement réservés. Reproduction ou communication o des liers interdite sous quelque forme que ce soit sans autorisation écrite du propriétaire. Propriete de c FCI. Droits de reproduction FCI.

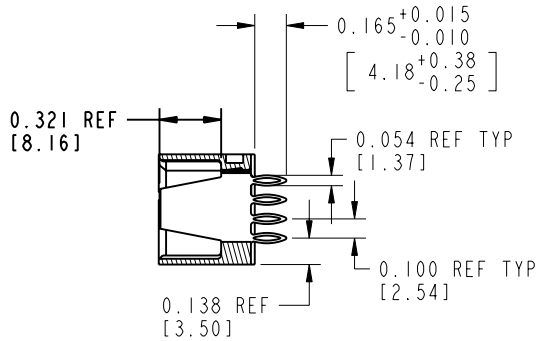
All rights strictly reserved. Reproduction or issue to third parties in any form, whatever is not permitted without written authority from the proprietor. Property of FCI. Copyright FCI.

PRODUCT NUMBER

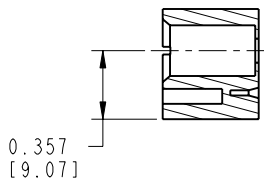
51860-002--
NOTE: 2



SECTION A-A



SECTION B-B



SECTION C-C

CONNECTOR NOTES:

- HOUSING MATERIAL: UL 94 V-0 GLASS FILLED HIGH TEMP THERMOPLASTIC
POWER CONTACT MATERIAL: COPPER ALLOY
SIGNAL CONTACT MATERIAL: COPPER ALLOY
 - 51860-002;51860-002LF;51860-002GLF PLATING SPEC. SEE PRINT:10064183
 - "MANUFACTURER'S" NAME, P/N, AND DATE CODE TO APPEAR ON THIS SURFACE
 - PRODUCT SPECIFICATION GS-12-149
- PCB NOTES:
- ALL DIMENSIONS ARE BASIC UNLESS OTHERWISE SPECIFIED.
 - ALL THROUGH HOLES ARE LOCATED WITH A TRUE POSITION OF 0.004 [0.10]
 - ALL HOLE DIAMETERS ARE FINISHED HOLE SIZE
 - Ø0.098[2.41] THROUGH HOLES ARE UNPLATED.
 - Ø0.0453±0.0010 [1.151±0.025] DRILLED HOLES PLATED WITH 0.0003 [0.008] MIN SnPb OVER 0.001 [0.03] TO 0.003 [0.08] Cu PLATING TO ACHIEVE A Ø0.040±0.003 [1.02±0.07] HOLE.
 - FOR PRESS FIT APPLICATION USE FCI CAM TOOL 430169-XXX.
 - DIMENSIONS AND TOLERANCES ARE IN ACCORDANCE WITH ASME Y14.5M, 1994 UNLESS OTHERWISE SPECIFIED.

mat'l code				SEE NOTE 1		tolerances unless otherwise specified		CUSTOMER		 www.fciconnect.com	
lfr	ecn no.	dr	date	linear	.XX±.01/0.X±0.3		COPY		 INCH/MM scale 1:1	title 5P + 24S + 1M + 6P VERTICAL PRESS-FIT HEADER	
c					.XXX±.005/0.XX±0.13					product family PWRBLADE code 213	
				angles	.XXX±.0020/0.XXX±0.051				size A 51860-002		
				dr	J. WITMER	10/3/01			sheet 2		
				engr	J. ALLISON	10/3/01					
				chr	J. ALLISON	10/3/01					
				appd	J. ALLISON	10/3/01					
sheet index	revision sheet										

cage code 22526

Pro/E

PDM: Rev:C

STATUS: Released

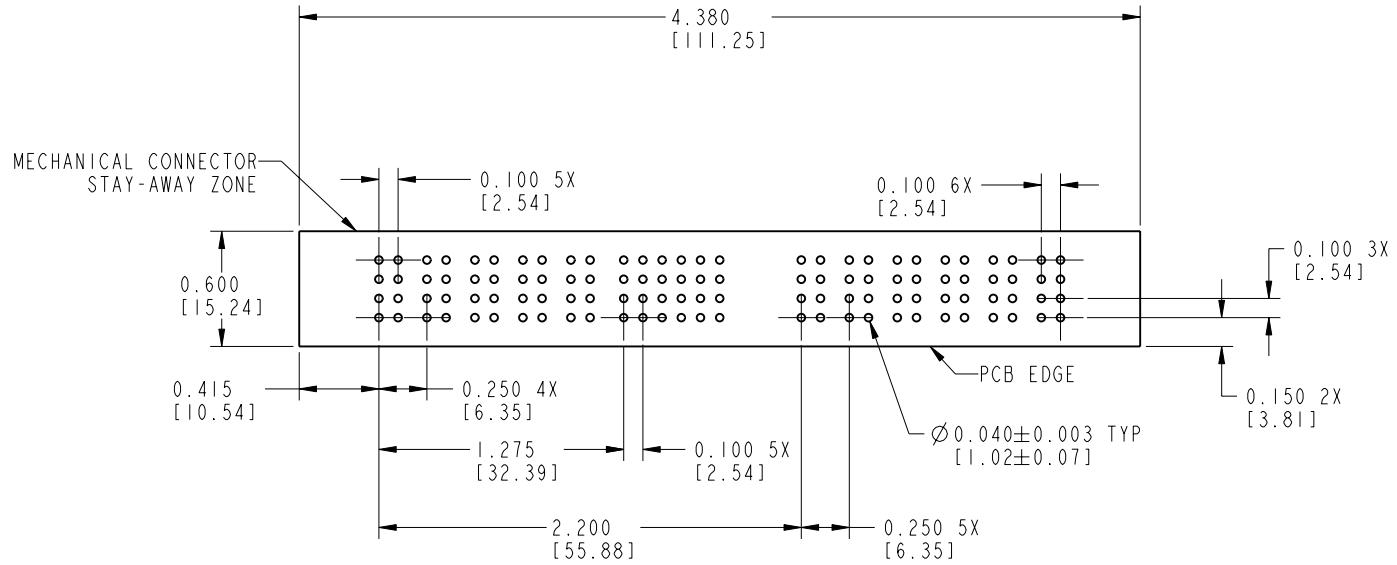
Printed: Aug 14, 2007

Tous droits strictement réservés. Reproduction ou communication o des liers interdite sous quelque forme que ce soit sans autorisation écrite du propriétaire. Propriété de c FCI. Droits de reproduction FCI.

All rights strictly reserved. Reproduction or issue to third parties in any form whatever is not permitted without written authority from the proprietor. Property of FCI. Copyright FCI.

PRODUCT NUMBER

51860-002--
NOTE: 3



RECOMMENDED PCB LAYOUT

mat'l code		SEE NOTE 1		tolerances unless otherwise specified		CUSTOMER		 www.fciconnect.com	
lfr	ecn no.	dr	date	linear	.XX±.01/0.X±0.3	COPY		title	
c					.XXX±.005/0.XX±0.13	projection		5P + 24S + 1M + 6P	
				angles	.XXX±.0020/0.XXX±0.051			VERTICAL PRESS-FIT HEADER	
				dr	J. WITMER 10/3/01	INCH/MM		product family	
				engr	J. ALLISON 10/3/01			PWRBLADE	
				chr	J. ALLISON 10/3/01	scale		code	
				appd	J. ALLISON 10/3/01	1:1		213	
sheet index		revision sheet						size	
								dwg no	
								A 51860-002	
								sheet	
								3	

coge code 22526

Pro/E

PDM: Rev:C

STATUS: Released

Printed: Aug 14, 2007